



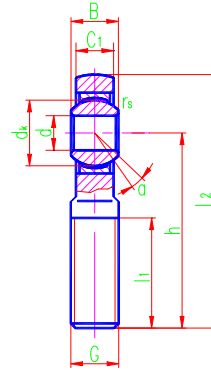
Rod ends



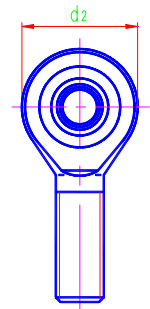
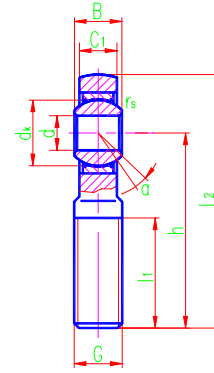
PTFE ($d \leq 30$)

SA...C

PTFE (d 30)



SA...ET-2RS



Sliding contact surfaces Steel PTFE composite material($d \leq 30$)
Steel PTFE fabric(d 30)

Bearing number	Dimensions mm											Load ratings kN		Weight ≈kg
	d	B	dk	C ₁ max	d ₂ max	G 6g	h	l ₁ min	l ₂ max	r _s min	α° ≈	Dynamic	Static	
SA5C	5	6	10	4.5	21	M5	36	16	46.5	0.3	13	3.6	3.9	0.011
SA6C	6	6	10	4.5	21	M6	36	16	46.5	0.3	13	3.6	5.5	0.013
SA8C	8	8	13	6.5	24	M8	42	21	54	0.3	15	5.8	10	0.026
SA10C	10	9	16	7.5	29	M10	48	26	62.5	0.3	12	8.6	16	0.044
SA12C	12	10	18	8.5	34	M12	54	28	71	0.3	10	11	23	0.066
SA15C	15	12	22	10.5	40	M14	63	34	83	0.3	8	18	32	0.12
SA17C	17	14	25	11.5	46	M16	69	36	92	0.3	10	22	44	0.17
SA20C	20	16	29	13.5	53	M20×1.5	78	43	104.5	0.3	9	31	60	0.28
SA25C	25	20	35.5	18	64	M24×2	94	53	126	0.6	7	51	83	0.51
SA30C	30	22	40.7	20	73	M30×2	110	65	146.5	0.6	6	65	110	0.84
SA35ET-2RS	35	25	47	22	82	M36×3	140	82	181	0.6	6	112	146	1.4
SA40ET-2RS	40	28	53	24	92	M39×3	150	86	196	0.6	7	140	180	1.8
SA45ET-2RS	45	32	60	28	102	M42×3	163	92	214	0.6	7	180	240	2.5
SA50ET-2RS	50	35	66	31	112	M45×3	185	104	241	0.6	6	220	290	3.6
SA60ET-2RS	60	44	80	39	135	M52×3	210	115	277.5	1.0	6	345	450	5.7
SA70ET-2RS	70	49	92	43	160	M56×4	235	125	315	1.0	6	440	610	7.9
SA80ET-2RS	80	55	105	48	180	M64×4	270	140	360	1.0	6	567	750	12

“L” “ ” SAL20C M20×1.5-6g

For left-hand thread suffix “L” is added to bearings number and thread sign e.g. SAL20C M20×1.5L-6g