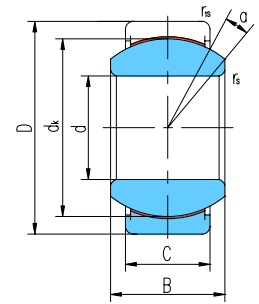


GE...ET/X



GE...ET-2RS/X

Sliding contact surfaces: Steel / PTFE fabric

Bearing number		Dimensions mm								Load ratings kN		Weight ≈ kg
		d	D	B	C	dk	rs min	r1s min	α° ≈	Dynamic	Static	
GE15ET/X	GE15ET-2RS/X	15	26	12	9	22	0.3	0.3	8	25	50	0.027
GE17ET/X	GE17ET-2RS/X	17	30	14	10	25	0.3	0.3	10	32	64	0.041
GE20ET/X	GE20ET-2RS/X	20	35	16	12	29	0.3	0.3	9	45	90	0.066
GE25ET/X	GE25ET-2RS/X	25	42	20	16	35.5	0.6	0.6	7	85	170	0.119
GE30ET/X	GE30ET-2RS/X	30	47	22	18	40.7	0.6	0.6	6	110	220	0.153
GE35ET/X	GE35ET-2RS/X	35	55	25	20	47	0.6	1	6	140	280	0.233
GE40ET/X	GE40ET-2RS/X	40	62	28	22	53	0.6	1	7	175	350	0.306
GE45ET/X	GE45ET-2RS/X	45	68	32	25	60	0.6	1	7	225	450	0.427
GE50ET/X	GE50ET-2RS/X	50	75	35	28	66	0.6	1	6	275	550	0.546
GE55ET/X	GE55ET-2RS/X	55	85	40	32	74	0.6	1	7	355	710	0.939
GE60ET/X	GE60ET-2RS/X	60	90	44	36	80	1	1	6	430	860	1.04