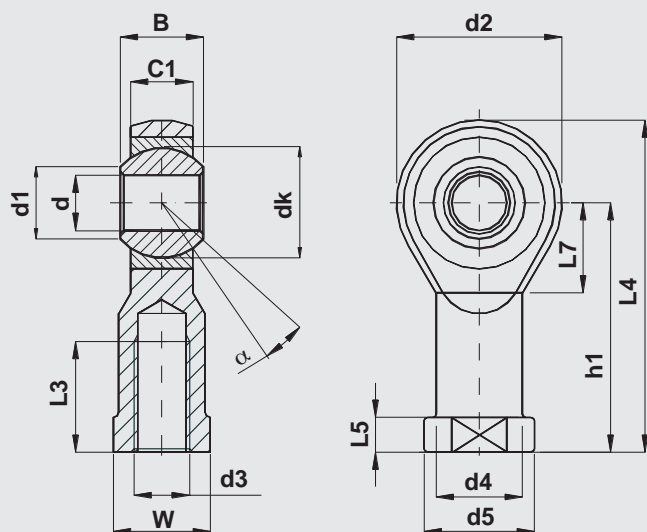


## DIN ISO 12240 - 4 Serie K female thread

Coupling: steel on steel self-lubricating

**CF ok**



**Body:**

Up to dimension 12 automatic steel  
From dimension 14 forged hardening steel  
surface finish zinc plated and passivated

**Outer race:**

sintered steel, self-lubricating impregnated with oil

**Ball:**

bearing steel, hardened, grinded and polished

Designation	d	d3	B	C1	d1	d2	d4	d5	dk	h1	L3	L4	L5	L7	W	max radial load Co.(daN)	$\alpha^\circ$ angle $\approx$	weight $\approx$ (kg)
	H9*	6H																
CF6 OK M6	6	M6	9	6,75	8,9	20	10	13	12,7	30	12	40	5	11	11	700	13	0,025
CF8 OK M8	8	M8	12	9	10,4	24	12,5	16	15,87	36	16	48	5	13	14	1200	14	0,046
CF10 OK M10	10	M10	14	10,5	12,9	28	15	19	19,05	43	20	57	6,5	15	17	1400	13	0,075
CF12 OK M12	12	M12	16	12	15,4	32	17,5	22	22,22	50	22	66	6,5	17	19	1900	13	0,112
CF16 OK M16	16	M16	21	15	19,3	42	22	27	28,57	64	28	85	8	23	22	4800	15	0,222

\* tolerance not included in DIN ISO 12240-4

For left-hand thread add L (example CFL16 OK M16)

Technical reading from page 1 to page 7

Application: mechanical engineering